

# **Quick Installation Guide**

150Mbps Wireless-N Adapter

300Mbps Wireless-N Adapter

Model No.: NE-WN1201D/NE-WN3201D

# Hardware Installation

You may see the **Found New Hardware Wizard** after the adapter has been inserted. Please click “**Cancel**”.

## For Windows XP:



## For Windows Vista:

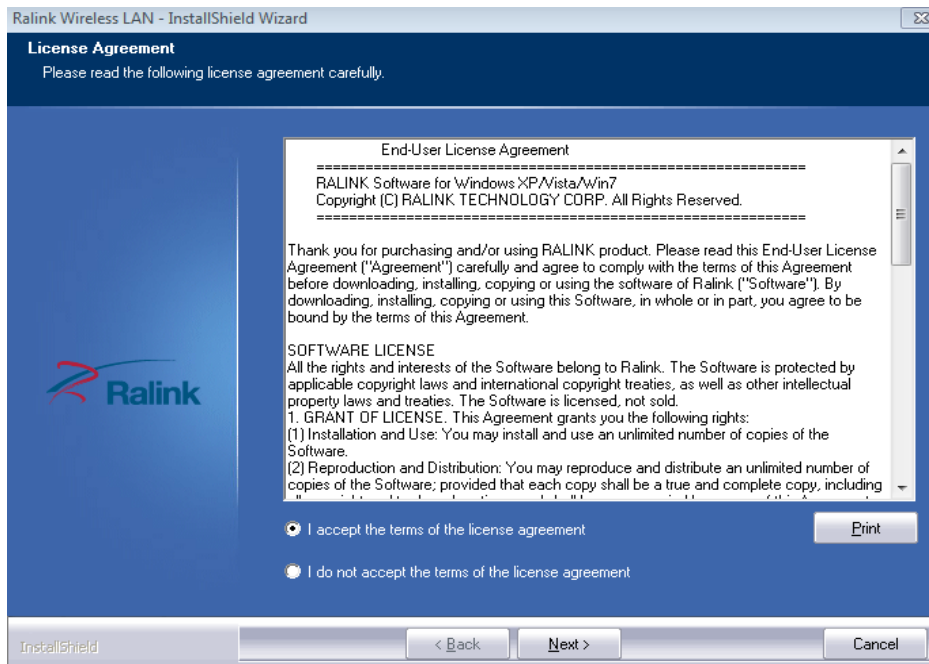


# Software Installation

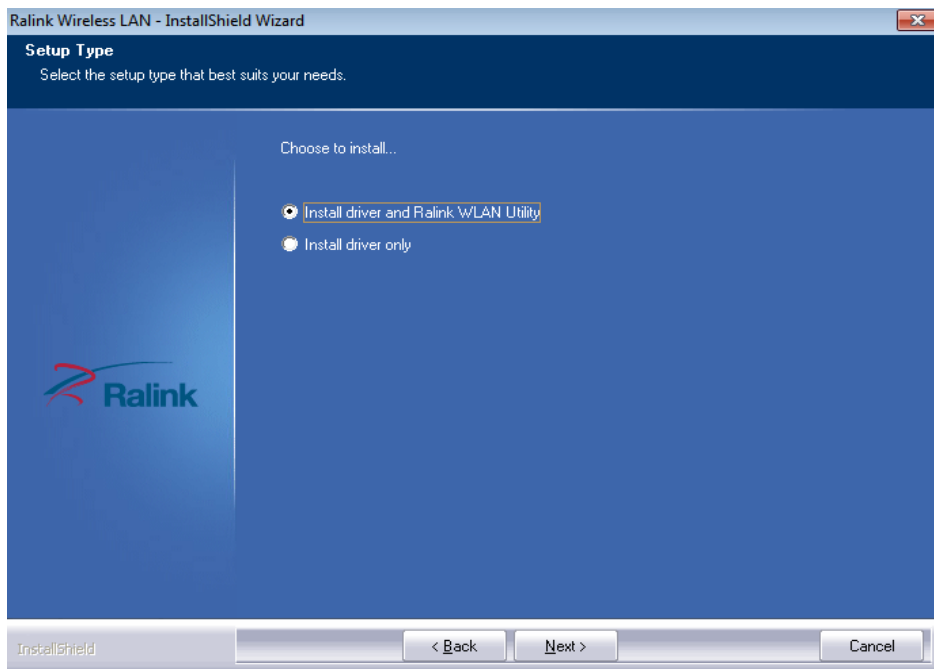
Caution: Product should NOT be inserted at this time. You will be asked to insert product after the software is completely installed.

*Note: Screen-shot image provided below is based on Windows 7. You may see different screen on other operating systems but procedures are the same.*

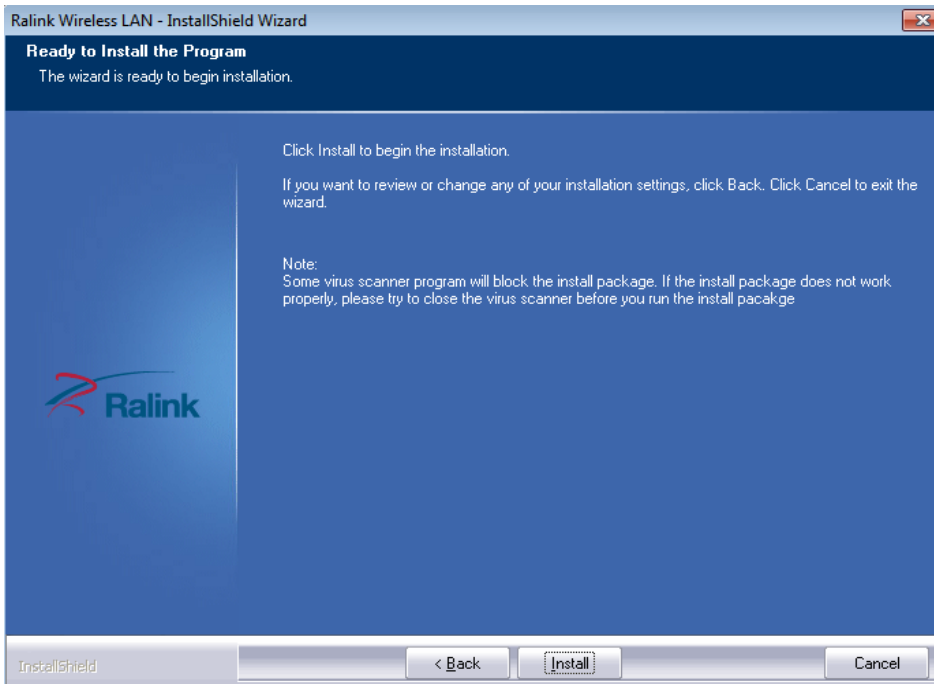
- A. Power on your computer and allow **Windows 2000/XP/Vista/7** to load fully.
- B. Insert the installation CD into your CD-ROM drive and find the appropriate product model to install, then run “Setup.exe” program. “Ralink Wireless LAN – InstallShield Wizard” will appear on your screen, then select “**I accept the terms of the license agreement**”, then click “Next”



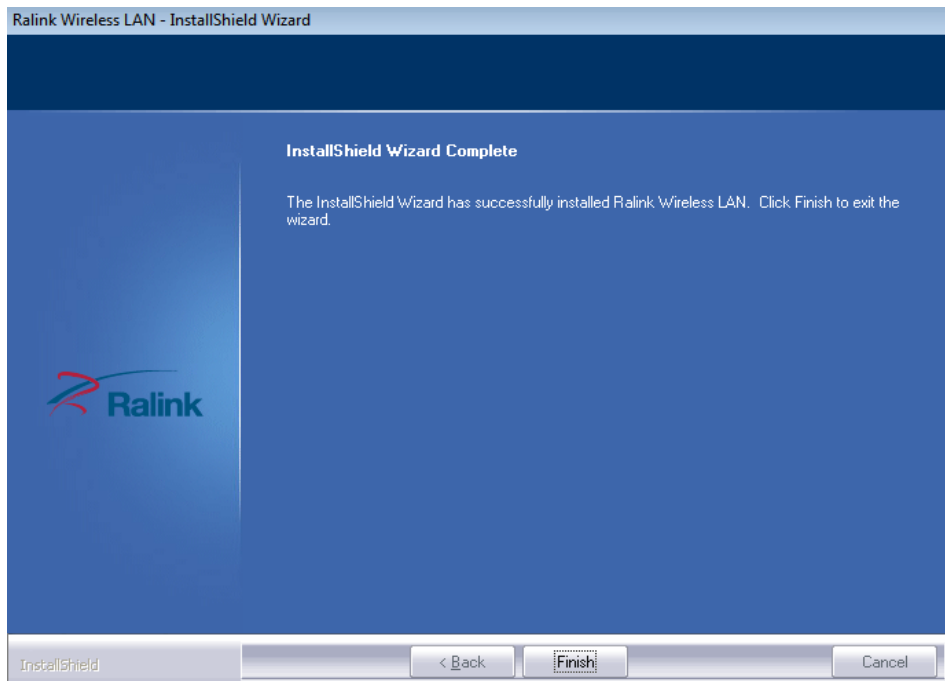
C. Choose “**Install driver and Ralink WLAN Utility**” and click “Next”.



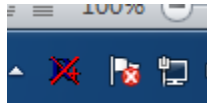
D. Click “**Install**” to begin the installation of driver and utility for your adapter.



- E. Click “Finish” when you see “InstallShield Wizard Complete” to finish the installation.



You will see “Configuration & Monitor Utility” icon appears on your system tray when the installation is completed successfully.



If you don't see the icon, we highly recommend you to restart the computer. However, if you still don't see the icon appears, please uninstall and reinstall the software again.